

Snagit 9.0

MindManager Output
By TechSmith Corporation

TechSmith License Agreement

TechSmith Corporation provides this manual "as is", makes no representations or warranties with respect to its contents or use, and specifically disclaims any expressed or implied warranties of merchantability or fitness for any particular purpose. TechSmith Corporation reserves the right to make changes to the content of this manual, at any time, without obligation to notify any person or entity of such changes.

The software described in this document is furnished under a license agreement. The software may be used, copied, or transferred only in accordance with the terms and conditions of the License Agreement. It is against the law to copy the software on any medium except as specifically allowed under the terms and conditions of the license agreement.

No part of this manual may be reproduced or transmitted in any form or by any means, electronic or mechanical, including photocopying, recording, or information storage and retrieval systems, or any other means, now known or hereafter becomes known, for any purpose other than the purchaser's personal use, without the express prior written permission of TechSmith Corporation.

Copyright © 1990-2008 TechSmith Corporation.
All Rights Reserved. Printed in the United States of America.

Trademarks

TechSmith, SnagIt, Camtasia, Camtasia Studio and Morae are U.S., EU and Japanese registered trademarks owned by TechSmith Corporation. EnSharpen, DubIt, TSCC, Enterprise Wide, and Newsmonger are also registered marks owned by TechSmith Corporation. UserVue, Screencast.com, and Rich Recoding Technology are also marks owned by TechSmith Corporation. The absence of a name/mark or logo in this paragraph/notice does not constitute a waiver of any and all intellectual property rights that TechSmith Corporation has established in any of its product, feature or service names/marks or logos.

All other registered trademarks and trademarks are the property of their respective companies. All rights reserved.

Use the Mindjet MindManager Output

The Mindjet® MindManager® Output for SnagIt lets you quickly and easily place SnagIt captures into your MindManager maps.

1. In SnagIt, select a profile and click **Capture**.
2. In SnagIt Editor, edit or annotate the capture.
3. In the *Send* tab, click the **MindManager** icon in the *Output Accessories* group.
4. The *Insert Capture As* dialog box appears. Select how you want to insert the capture. The capture is pasted into a map.

See *Customize the MindManager Output* for additional options.



If you click the **MindManager** button without any MindManager maps open, a new map is created and the capture is placed in it.

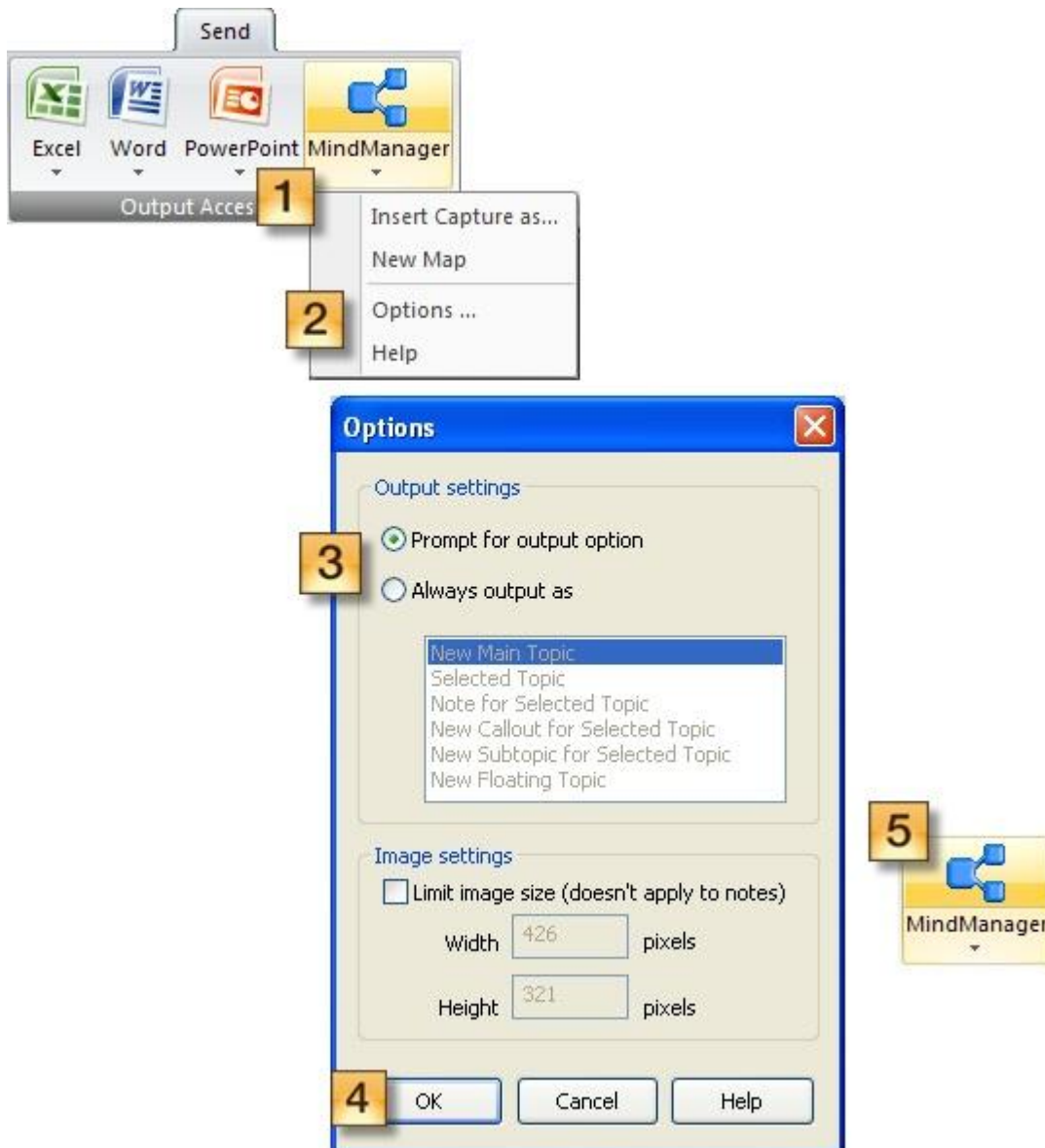
Some of the choices that you can choose to insert the capture as require a selected topic in the MindManager map. If a topic isn't selected a dialog will appear asking you if you want to **Add as a main topic**, **Cancel**, or check a box to **Always add as a main topic**.



Customize the MindManager Output

Customize in SnagIt Editor

1. Click the bottom portion of the **MindManager** icon in the *Send* tab > *Output Accessories* group.
2. From the dropdown menu, click **Options**. The *Options* dialog box appears.
3. Select an insertion option:
 - o **Prompt for output option**: Choose how to insert the capture.
 - o **Always output as**: Select the default output for the capture.
 - o **Limit image size**: Set a maximum size for captures going into maps. If your capture is larger than the limit, the capture is scaled down to help keep the capture from taking up too much room on your map. You can use the MindManager *Zoom* tool to zoom into the scaled capture.
4. Click **OK**.
5. Click the **MindManager** icon in the *Send* tab.



Customize in SnagIt

1. Click **Manage Accessories** in the Related Tasks pane.
2. Highlight **MindManager Output** option.
3. Click **Options**. The *Options* dialog box appears.
4. Select an insertion option:
 - **Prompt for output option**: Choose how to insert the capture.
 - **Always output as**: Select the default output for the capture.
 - **Limit image size**: Set a maximum size for captures going into maps. If your capture is larger than the limit, the capture is scaled down to help keep the capture from taking up too much room on your map. You can use the MindManager *Zoom* tool to zoom into the scaled capture.
5. Click **OK**.
6. Click **Close**.

